

# ingetech

ROBOTICS

THE **FUTURE** IS NOW, **FRIENDLY** ROBOTIC SYSTEMS

COMPANY PROFILE

[www.ingetechrobotics.com](http://www.ingetechrobotics.com)

1. THE COMPANY
2. VMV
3. STRENGTHS
4. ENGINEERING
5. FRIENDLY SYSTEMS
6. PRODUCTS
7. PARTNERS
8. SITE

# 1. The Company

---

INGETECH ROBOTICS, S. L. began his history in early 2017.

Founded by experimented engineers in packaging and logistics to deliver robotic solutions for end of line.

*“We haven’t scared to work and improve day by day, and when there are illusion, motivation, and attitude, we think there is nothing impossible.*

*That’s why we started up a great project that nowadays it’s a reality. A company able to deliver robotics solutions and accessories for end of production lines.”*

Antonio Aldecoa , CEO at INGETECH ROBOTICS

- NAME                    **INGETECH ROBOTICS, S. L.**
- DATE                    Foundation, April 2<sup>th</sup> 2017
- LOCATION            50410 Cuarte de Huerva - ZARAGOZA (Spain)
- MAPS                    J349+CF Cuarte de Huerva
- WEB                     [www.ingetechrobotics.com](http://www.ingetechrobotics.com)
- MAIL                    [info@ingetechrobotics.com](mailto:info@ingetechrobotics.com)

## 2. VMV

INGETECH ROBOTICS, base his activity over 3 main principles.

### VISSION

Facilitate the integration of robotic solutions in industry developing Easy and Friendly Systems



### MISSION

Produce HIGH QUALITY robotic systems that meet and exceed expectations of our customers.



### VALUES

Passion – Innovation - Honesty



## 3. STRENGTHS

---

INGETECH ROBOTICS, base his activity over 4 pillars

- **KNOWLEGE** to reach the optimal solution of productive processes.
- **EXPERIENCE** Engineers with more than 30 years in packaging industry
- **WARRANTY** applying standard and custom solutions with proved performance.
- **SAFETY** taking all the precautions or measures in advance to avoid harm, risk, or danger.

## 4. ENGINEERING

INGETECH ROBOTICS designs your end of line optimizing your production process.

- Process engineering
- Optimization of production processes
- Implementation design and 3D simulation
- Design and manufacture of conveying systems
- Design and manufacture of robot palletizing and robotic case packing cells
- Integration of peripheral machinery
- Assembly and start up



## 4. FRIENDLY SYSTEMS

INGETECH ROBOTICS thinks about the needs of our clients to project **FRIENDLY SYSTEMS**

- **Easy drive**



No specialized training required.

- **Guaranteed security**



No risk of human damage.

- **Collaborative integrations**

To develop the most advanced



Human and robots working together.

- **Efficient systems**



Performing its function perfectly.

- **Peace of mind**



Less worries. Less troubleshoots.

- **Improve of productivity**



Non-stop production, no breakdowns. Speed and precision.

- **Profitability**



Rapid return on investment.

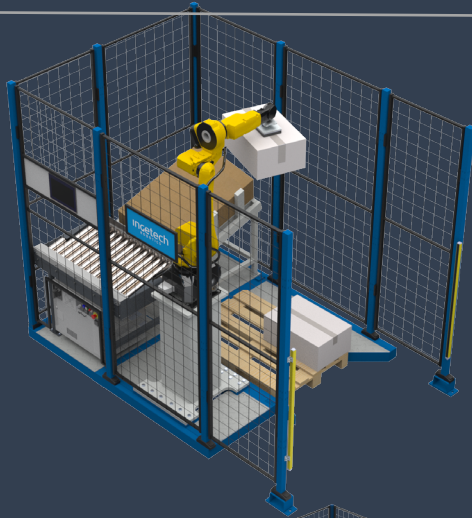
## 6. PRODUCTS

---

- STANDARD ROBOTIC PALLETIZING CELLS
- CUSTOM ROBOTIC PALLETIZERS
- COLLABORATIVE PALLETIZING CELLS
- ROBOTIC CASE PACKING
- ROBOT AUTOMATION APPLICATIONS
- CONVEYORS
- PACKAGING MACHINERY
- ROBOTIC ACCESSORIES



# PALLETIZING CELLS



Unitarian Palletizing

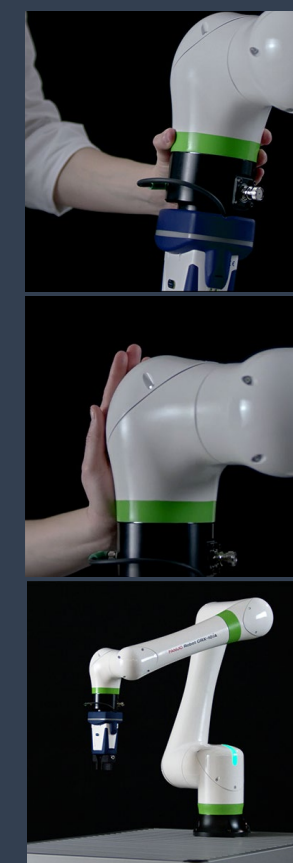


Layer Palletizing



Rows Palletizing

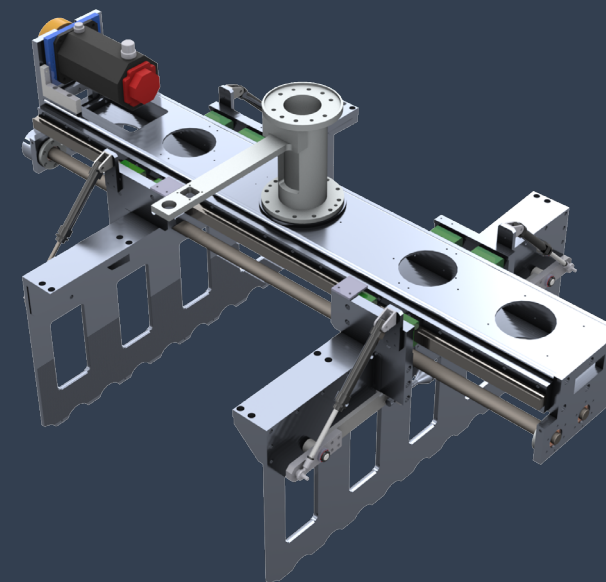
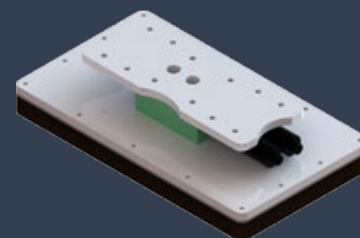
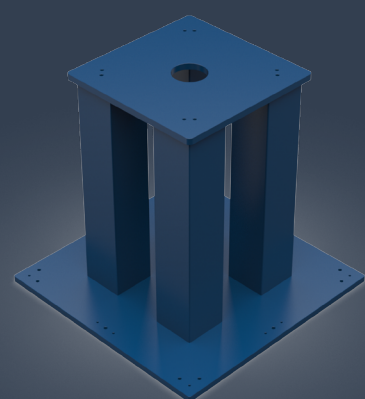
# COLLABORATIVE ROBOTICS



## ROBOTIC ACCESORIES



To complete our sales program, we are able to design and produce many kinds of robotic accessories like gantries, tracks, telescopic columns, vacuum and clamps grippers, etc.



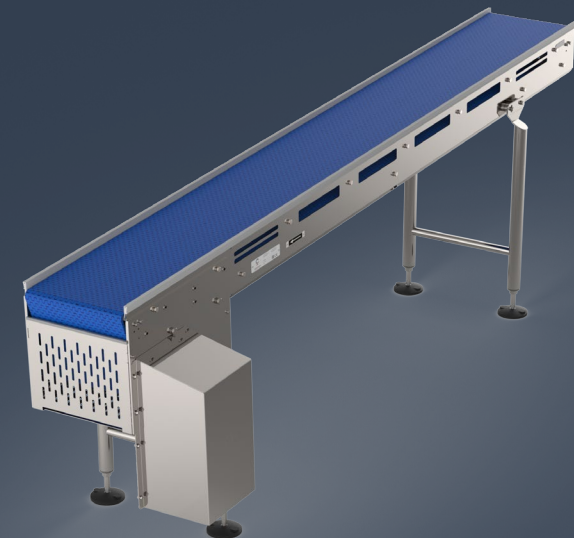
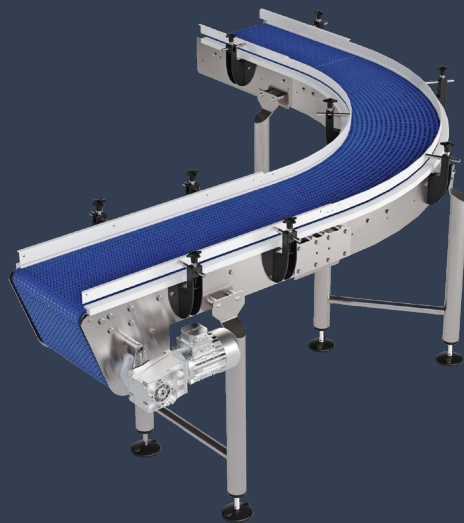
## CONVEYORS



We can produce all the conveyors for your end of line, either conveyors for cases or palet conveyors.

Such as roller conveyor as belt conveyor or modular belt, such as curve conveyors as straight conveyors.

High quality items for packaging industry and food industry with FDA Certificate, and CE Normative compliance required.

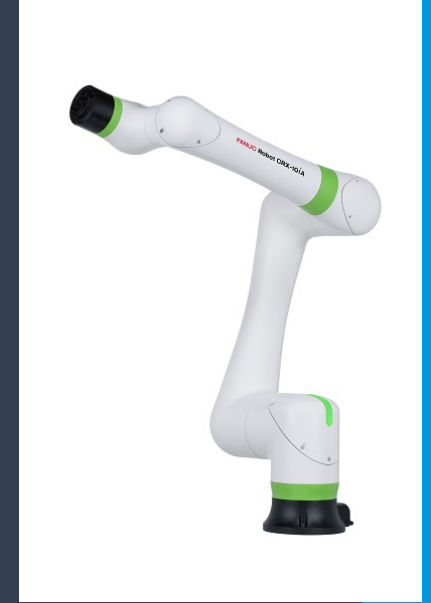
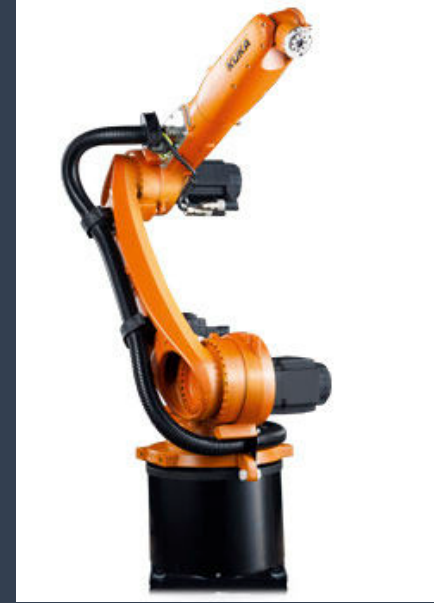
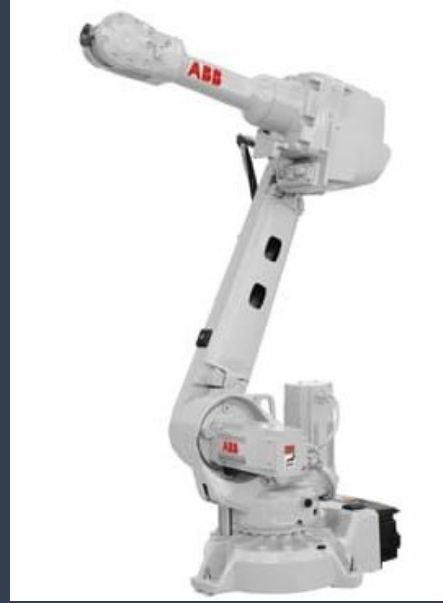


## PERIPHERIC MACHINES



We can integrate also all the auxiliary machinery like CASE ERECTORS, WEIGHT AND METAL DETECTORS, CASE SEALERS, PALLET WRAPPING MACHINES, etc.

## ROBOTS



We can install many robot brands that means to choose the best option for each application.

Let us advise you about your robot and you'll not fail.

## 7. PARTNERS



## 8. SITE

INGETECH ROBOTICS, S. L.  
Polígono El Tejar, nave 2, Ctra. Valencia km.6,2  
50410 – Cuarte de Huerva (Zaragoza) SPAIN

Tel. +34 976 50 43 78  
[Info@ingetechrobotics.com](mailto:Info@ingetechrobotics.com)  
[www.ingetechrobotics.com](http://www.ingetechrobotics.com)

J349+CF Cuarte de Huerva





ingetech  
ROBOTICS

[www.ingetechrobotics.com](http://www.ingetechrobotics.com)